



— Simplify your life —
AV Access

HDEX80-KVM

1080P HDMI KVM Extender with USB2.0



User Manual

Disclaimers

The information in this manual has been carefully checked and is believed to be accurate. AV Access Technology Limited assumes no responsibility for any infringements of patents or other rights of third parties which may result from its use.

AV Access Technology Limited assumes no responsibility for any inaccuracies that may be contained in this document. AV Access Technology Limited also makes no commitment to update or to keep current the information contained in this document.

AV Access Technology Limited reserves the right to make improvements to this document and/or product at any time and without notice.

Copyright

Copy, Reproduce, Distribute and/or Edit of this document or part of it as well as utilization of its contents and communication thereof to others without express authorization are prohibited. Offenders will be held liable for payment of damages. All rights created by patent grant or registration of a utility model or design patent are reserved. Copyright ©2017 AV Access Technology Limited All rights reserved.

Trademarks Notice

All products or service names mentioned in this document may be trademarks of the companies with which they are associated.

Contact Us

Business inquiry: services@avaccess.com

Technical problems: support@avaccess.com

Important Safety Instructions

- Do not expose this device to rain, moisture, dripping or splashing. No objects filled with liquids, such as vases, shall be placed on the device.
- Do not install or place this unit in a bookcase, built-in cabinet, or in another confined space. Ensure the unit is well ventilated.
- To prevent risk of electric shock or fire hazard due to overheating, do not obstruct the unit's ventilation openings with newspapers, tablecloths, curtains, or similar items.
- Do not install near any heat sources such as radiators, heat registers, stoves, or other device (including amplifiers) that produce heat.
- Do not place sources of naked flames, such as lighted candles, on the unit.
- Clean this device only with dry cloth.
- Unplug this device during lightning storms or when unused for long periods of time.
- Protect the power cord from being walked on or pinched, particularly at plugs.
- Only use attachments / accessories specified by the manufacturer.
- Refer all servicing to qualified service personnel.

Table of Contents

Introduction.....	2
Overview	2
Features	2
Package Contents	3
Panel	4
Installation and Application.....	6
Brackets Installation.....	6
Steps to install the device in a suitable location.....	6
Application	7
Specifications	9
Trouble Shooting	10
Warranty	11

Introduction

Overview

The HDEX80-KVM extends full HD HDMI signal up to 80m/260ft via a single Cat X cable, without any video loss and time delay. It supports USB 2.0 pass-through. With USB Host connector in transmitter, and USB Device connectors in receiver, it provides remote source PC control with keyboard and mouse, interactive display operation, data transmission and USB streaming over distances up to 80m/260ft. It has many professional designs which suitable for various application scenario, especially for engineering project usage. Two-way PoE (Power over Ethernet), integrates power into the Cat 5e/6 cable, only one power adapter is needed to either transmitter or receiver.

Features

- Extends full HD HDMI signal up to 80m/260ft via a single Cat X cable without signal loss and delay
- Extends high speed USB 2.0 signal (480Mbps) up to 260ft/80m, provides 2xUSB 2.0 ports at display end
- Supports two-way PoE (Power over Ethernet), only one power adapter is needed to either transmitter or receiver
- Auto EDID management automatically adjusts to overcome compatibility issues
- Plug and play, no driver needed.

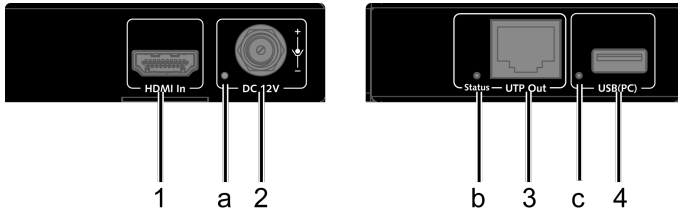
Package Contents

Before you start the installation of the product, please check the package contents:

- HDEX80-KVM Transmitter x 1
- HDEX80-KVM Receiver x1
- Power Adapter (DC 12V 2A) x 1
- USB type-A to type-A Cable x 1
- Mounting Brackets (with Screws) x 4
- User Manual x 1

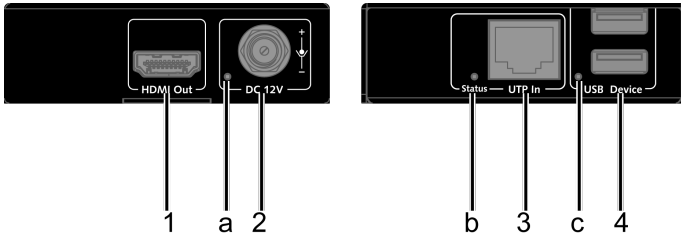
Panel

Transmitter



No.	Name	Description
1	HDMI In	HDMI signal input. Connects to an HDMI source device
2	DC 12V	Power input. Connects to the power adapter provided. Only one power adapter is needed at transmitter or receiver side.
3	UTP Out	Connects to the receiver via Cat X cable.
4	USB (PC)	Connects to a computer.
a	Power LED	Lights on when the device is powered on.
b	Status LED	On: HDMI data is being transmitted. Off: No signal.
c	USB (PC) LED	Breathing Status: No USB device is connected. Solid on: USB device is linked. Flashing: USB data is being transmitted.

Receiver



No.	Name	Description
1	HDMI Out	HDMI signal output. Connect to an HDMI display device
2	DC 12V	Power input. Connect to the power adapter provided. Only one power adapter is needed at transmitter or receiver side.
3	UTP In	Connects to the transmitter via Cat X cable.
4	USB Device	Connects to the USB devices.
a	Power LED	Lights on when the device is powered on.
b	Status LED	On: HDMI data is being transmitted. Off: No signal.
c	USB Device LED	Breathing Status: No USB device is connected. Solid on: USB devices are linked. Flashing: USB data is being transmitted.

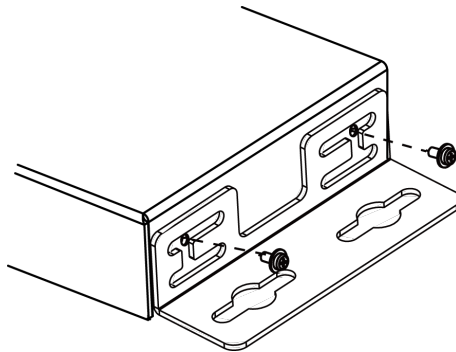
Installation and Application

Brackets Installation

Note: Before installation, please ensure HDEX80-KVM is disconnected from the power source.

Steps to install the device in a suitable location

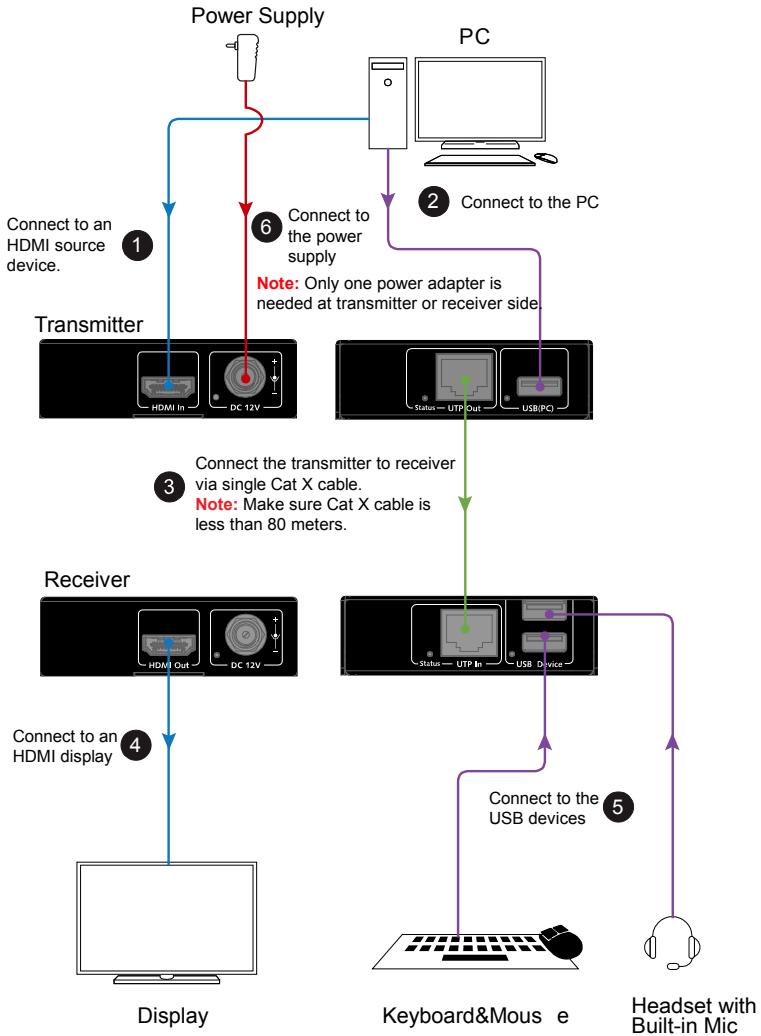
1. Attach the installation bracket to the enclosure using the screws that were provided in the package separately. The bracket height can be adjusted up/down or bracket face up or down.
2. The bracket is attached to the enclosure as shown.



3. Repeat steps 1-2 for the other side of the unit.
4. Attach the brackets to the surface you want to hold the unit against using the screws (provided by others).
5. Repeat steps 1-4 to install the receiver.

Application

Installation requirements



- HDMI source devices: With HDMI output interface, DVD, PS3, STB, PC etc.

Installation and Application

- Display devices: With HDMI input interface, SDTV, HDTV, projector etc.
- USB devices: With USB2.0 input interfaces, keyboard, mouse, camera, Mic, mobile HD etc. (Users should insert the power adapter to receiver when connected the hard disk to the USB port)
- Cat X cables: UTP/STP Cat5e/6/6a cable, which following the standard of IEEE-568B.

Specifications

Technical	
Video Signal Type	HDMI 1.3 with HDCP 1.4
Input/Output Resolution Support	1080P@60/50/30/25Hz; 720P@60/50Hz; 480P@60Hz
Audio Format Supported	PCM 2.0
Max Data Rate	6.75 Gbps
Transmission Distance	HDMI Signal: Up to 260ft/80m via Cat 5e/6 or better cable. USB Signal: Up to 260ft/80m.
General	
Operating Temperature	-20°C to 70°C
Storage Temperature	-40°C to 80°C
Humidity	20% to 90%, non-condensing
Power Consumption (Maximum)	≤6.3 W (Pair)
Device Dimensions (W x H x D)	98.2 mm x 23 mm x 75 mm/ 3.87" x 0.91" x 2.95"
Product Weight	Transmitter: 0.22kg/0.48lb Receiver: 0.22kg/0.48lb

Trouble Shooting

Steps of Regular Troubleshooting Routine

- 1 Power:** Please make sure all devices are powered on. (source, extender, display devices)
- 2 Indicator:** Please make sure LED indicators of transmitter and receiver are normal according to user manual.
- 3 Devices:** Please make sure picture can be shown normally when connecting source to display devices directly.
- 4 Cable:** Plug in and out HDMI/Cat X/USB cable or try another HDMI/Cat X/USB cable.
 - Cat 5e/6/6a cable is recommended.
 - Please make sure Cat X cable is less than 260ft/80m.
 - Please make sure the two connectors of one Cat X cable are same standard (IEEE 568B).
- 5 Compatibility:** Please test other source and display devices to determine whether it is a compatibility issue.

Typical Questions

How to deal with cutting off when you connect USB device to receiver?

- Please make sure your USB device is working normally.
- Please insert the power adapter to receiver power port instead of transmitter since the PoE is not able to power on your USB device such as hard disk.

Warranty

Products are backed by a limited 1-year parts and labor warranty. For the following cases AV Access Technology Limited shall charge for the service(s) claimed for the product if the product is still remediable and the warranty card becomes unenforceable or inapplicable.

1. The original serial number (specified by AV Access Technology Limited) labeled on the product has been removed, erased, replaced, defaced or is illegible.
2. The warranty has expired.
3. The defects are caused by the fact that the product is repaired, dismantled or altered by anyone that is not from an AV Access Technology Limited authorized service partner. The defects are caused by the fact that the product is used or handled improperly, roughly or not as instructed in the applicable User Guide.
4. The defects are caused by any force majeure including but not limited to accidents, fire, earthquake, lightning, tsunami and war.
5. The service, configuration and gifts promised by salesman only but not covered by normal contract.
6. AV Access Technology Limited preserves the right for interpretation of these cases above and to make changes to them at any time without notice.

Thank you for choosing products from AV Access.



AV Access — *Simplify your life* —

AV Access Technology Limited

V1.0.1